



Operation Manual

POWERCLICK

BASIS-SET



**ALL POWER.
NO LIMITS.**





Fig. 1



Fig. 2

Description

POWERCLICK is an innovative fastening system that can be mounted on any bike and allows a variety of items to be easily transported. With our click system, various accessories such as bottle holders, panniers or tools can be securely attached to the bike.

The user-friendly design ensures easy installation. With the POWERCLICK you can enjoy the freedom of cycling while transporting everything effortlessly.

Scope of Delivery



Fig. 3

- 1x POWERCLICK BASE
- 1x BASEPAD
- 2x MULTIPLATE
- 1x Spacer rings
- 2x M5x20 Countersunk Screw
- 2x 200mm STRAP
- 2x 300mm STRAP

Function

ATTACH:

Position MULTIPLATE on the BASE. Make sure that the plates are not twisted too much relative to each other.

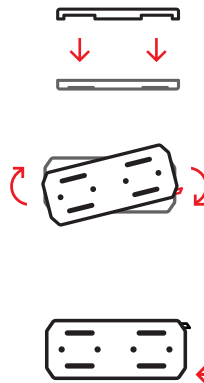


Fig. 4

TWIST:

Turn MULTIPLATE clockwise until it clicks into place.

LOCK:

The MULTIPLATE is locked in position by pressing the red side of the locking rocker. To release the black side must be pressed.

Fastening POWERCLICK BASE



Fig. 5 Mount with Screws

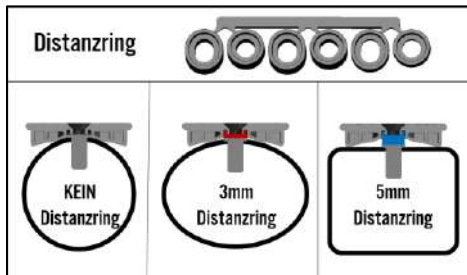


Fig. 6 Spacer Rings



Fig. 7 Mount with STRAPS



Fig. 8 Template (Set included)



Fig. 9 Threading the straps

Screws:

The thread of the bottle holder holder is used for fastening with screws (Fig. 5).

1. Remove two of the required spacer rings from the row and press them into the desired screw holes on the underside of the BASE.
2. Clean the surface and position BASE
3. Attach to the bicycle frame with the included screws. *Empfehlung:*

Use the low spacer rings for oval frame tubes and the high spacer rings for flat frame tubes. With round frame tubes, spacer rings are generally not required (Fig. 6).

For precise determination, cut out the template provided and insert it into the thread on the bicycle frame. Read the required distance height (Fig. 8)

Wall mounting:

1. Remove BASEPAD (rubber pad).
2. Underlay all screw holes with the four high spacer rings.
3. Attach to the wall with suitable screws.

STRAPS:

Use the ANTI-SLIP STRAPS to attach the BASE anywhere on the bike (Fig. 7).

1. Thread STRAPS through the BASE (Fig. 9).
2. Clean the surface and position BASE.
3. Wrap STRAPS around the bicycle frame and guide the free end through the plastic tab. Fold the end over, tighten tightly and attach (Fig. 9).



The Velcro straps are coated with non-slip silicone. The BASE can be attached to almost any position on the bike using the straps. Additional lengths can be purchased from us



To ensure proper use, the BASE must not be bent when attaching it. If necessary, use the spacer rings provided



The use of the included screws is recommended. If other screws have to be used, make sure that the screw head is completely recessed



Observe the tightening torque provided by the bicycle manufacturer! Different distance heights may also be required for curved surfaces.



The STRAPS may be tightened with a maximum of 20kg (200N). Regular checking/tightening is recommended

MULTIPLATE fastening of objects



Fig. 10 MULTIPLATE mount STRAPS/Screws

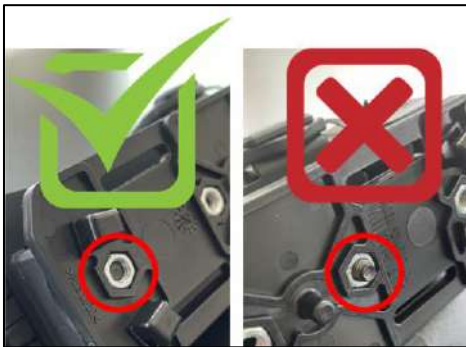


Fig. 11 Right Screw Size

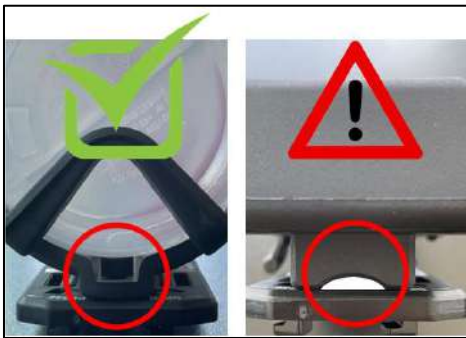


Fig. 12 cavity objects

A wide variety of objects can be mounted on the MULTIPLATE using screws or STRAPS (or a combination if necessary) (Fig. 10).

SCREWS:

Galvanized steel nuts are embedded in the MULTIPLATE for fastening with screws. The hole spacing corresponds to the standard bottle cage mount (64mm).

1. Position the object on the MULTIPLATE.
2. Choose suitable screws (not included).
3. Screw the item together

STRAPS:

With the ANTI-SLIP STRAPS any object can be attached to the MULTIPLATE.

1. Thread STRAPS through the MULTIPLATE.
2. Position the object.
3. Wrap STRAPS around the item and thread the free end through the plastic tab. Fold the end over, tighten tightly and attach.



The Velcro straps are coated with non-slip silicone. Almost anything can be attached to the MULTIPLATE using the tapes. Additional lengths can be purchased from us



The screw tips must be flush with the hexagon nuts without protruding (Fig. 11). Make sure to tighten both screws evenly.



Some items have a recess for the frame tube directly below the screw points. The cavity between the object and the MULTIPLATE should be underlaid (Fig. 12). If this is not possible, they may only be tightened with a low torque.



The STRAPS may be tightened with a maximum of 20kg (200N). Regular checking/tightening is recommended

Cleaning and care



The POWERCLICK can be cleaned under running water with a soft brush or cloth. Cleaning with a high-pressure cleaner is not recommended.



Hard sponges and brushes can damage the surface. Do not use aggressive cleaning agents.

Technical data

BASE

L x B x H [mm]	128,5 x 48,5 x 8,7
Material	PA6 CF10

BASEPAD

L x B x H [mm]	128,5 x 44 x 6
Material	NBR60

MULTIPLATE

L x B x H [mm]	128,5 x 49,5 x 12,3
Material	PA6 CF10
Material hexagon nut	Steel galvanized

STRAPS

L x B x H [mm]	200/300 x 20 x 1
Material	Silicon, cotton, Polyamid

Made in Germany

Liability

We have made every effort to make the instructions for use correct, complete and as accurate as possible. Deviations cannot be completely ruled out, so no liability can be accepted for errors in the instructions for use provided. We assume no liability for damage caused by non-observance of the instructions for use or improper use.

Needed Tools

Allen key 3mm
Scissors (for cutting out the template)

imprint



ADEN GmbH
Kranzhaldenstr. 23
73249 Wernau
GERMANY
Telefon: +49 (0) 7153 7036 300 00
WhatsApp: +49 (0) 152 545 878 20
E-Mail: info@aden-sports.de

